

ZENcelo  
be in-standing



Maximum Retail Prices  
effective 20th Dec 2013



# The revolutionary **Full-Flat** switch



Schneider  
Electric™

# The revolutionary Full-Flat switch



## > In-standing

An outstanding person adds value to the work and life of other people, always doing the right thing at the right place, with a just-right degree of visibility.

After all, the art of addition is not about shouting out loud. It's about an in-standing way of being. ZENcelo, the revolutionary Full-Flat switch for an in-standing interior design.

## > The revolutionary Full-Flat switch

The Full-Flat form factor has redefined many facets in life. Aeroplane seats. TVs. Mobile phones. Electric stoves... And now switches. Aesthetically pleasing flat switches are in fact available. But only exclusive to luxurious electronic switches and lighting automation systems. The ZENcelo Full-Flat switch has been created for the majority who use electro-mechanical switches. Even on switches you never imagined can be Full-Flat...With ZENcelo, luxury is no longer defined by price. But by wisdom - and style.

## > Indicate the Current Status

Form does not sacrifice function. Knowing when the Full-Flat switch is turned on is not taken for granted. The patent-pending "Ondicator" changes to marigold when turned "on". And blends into the same colour as the dolly when "off". Meticulously designed to the finest detail - Not only for looks, but also for practicality.

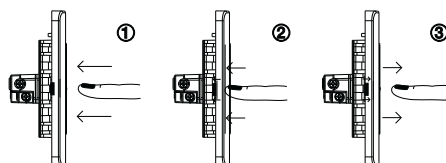
## > Embrace Quality

Made of corrosion resistant, heat resistant and impact resistant polycarbonate. Data socket with patented integrated shutter. Electrical socket with reinforced-nylon protective shutter. Switches are electric arc encapsulated. Philips head screw to fit both flat and cross head screwdrivers. Switches tested to 80,000 times. Sockets tested to 15,000 cycles. Durable to last more than a decade. IEC, BS, SS, MS, GB, CCC and/or IS compliant\*. All RoHS compliant.

## > Enabled by a New Physics

Switch designs are limited by many factors, primarily the switch mechanism. The patent-pending "impress" (iso-motion-press) mechanism ensures the switch dolly remains stationary when it is "on" or "off", and at the same time occupying a much smaller footprint. Freedom in design has become a reality. Enabled by impress mechanism, ZENcelo makes the future flatter than you ever imagined.

**impress**  
mechanism





Description	Reference Number	Zencelo India (INR) White Colour	Dark Grey Colour	Std. Packing
-------------	------------------	-------------------------------------	------------------	--------------

### 6A Switches

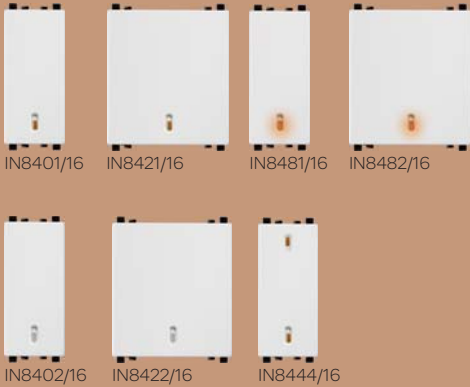


6A 1 Way Switch	IN8401	151 *	185	10
6A 1 Way Switch (2M Size)	IN8421	218	277	10
6A 2 Way Switch	IN8402	177 *	218	10
6A 1 Way Switch With Neon	IN8481	213 *	271	10

### Intermediate Switches

10AX Intermediate Switch	IN8430/IM	445	532	10
--------------------------	-----------	-----	-----	----

### 16A Switches



16Ax-20A 1 Way Switch	IN8401/16	207 *	253	10
16Ax-20A 1 Way Switch (2M Size)	IN8421/16	287	345	10
16Ax-20A 1 Way Switch With Neon	IN8481/16	290 *	349	10
16Ax-20A 1 Way Switch With Neon (2M Size)	IN8482/16	341	412	10
16Ax-20A 2 Way Switch	IN8402/16	285 *	328	10
16Ax-20A 2 Way Switch (2M Size)	IN8422/16	342	396	10
16AX-20A 1 Way 2G Switch in One Module	IN8444/16	328 *	414	10

### Double Pole Switches



20A DP Switch With Neon (2M Size)	IN8486/20	447 *	508	5
32A DP Switch With Neon (2M Size)	IN8486/32	706 *	881	5

### Bell Switches



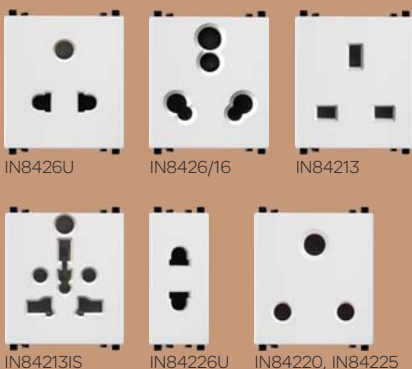
6A Door Bell	IN8405	194 *	239	10
6A Door Bell (2M Size)	IN8425	276 *	333	10
6A Door Bell With Neon	IN8485	246	295	10
6A Door Bell With Neon (2M Size)	IN8486	306	348	10

### Motor Starter Switches



25A Motor Starter Switch (2M Size)	IN8425MS	1,171 *	1,304	10
------------------------------------	----------	---------	-------	----

### Sockets



2-3 Pin Universal Socket With Shutter	IN8426U	222 *	267	10
16A/6A 3 Pin Socket With Shutter	IN8426/16	331 *	401	10
13A Flat Pin Socket With Shutter	IN84213	447	517	10
International Socket With Shutter	IN84213IS	420 *	512	5
Universal 2 Pin Socket With Shutter	IN84226U	227 *	273	10
20A 3 Pin Socket With Shutter	IN84220	416 *	466	5
25A 3 Pin Socket With Shutter	IN84225	451 *	544	5

\* Available ex warehouse  
For Dark Grey Colour module add (BZ) as Suffix



Description	Reference Number	Zencelo India (INR)		Std. Packing
		White Colour	Dark Grey Colour	

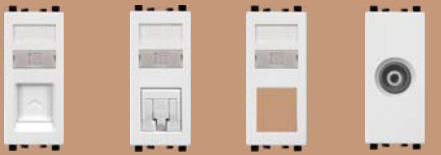
### Electronic Units



IN8404D IN84SFR

400W Dimmer	IN8404D	658 *	748	10
Fan Control (5 Speeds)	IN84SFR	779 *	928	5

### Telecommunication Accessories & Connection Unit



IN8431RJS4 IN8431RJ6 IN8431RJC IN8431TV

RJ11 1G Tel Outlet With Shutter	IN8431RJS4	229 *	278	10
Data Outlet (RJ45) Cat 6 (Shuttered)	IN8431RJ6	812 *	974	10
Data Outlet Wall Plate (For RJ45 Key Stone Jack)	IN8431RJC	209	252	10
TV Socket	IN8431TV	164 *	202	10

### Hotel Products



INH8451 INH8452 INH8453 INH8454 INH8455

DND Panel	INH8451	1001	1,197	10
DND Switch	INH8452	490	580	10
DND Switch 2 Module	INH8453	500	600	10
MMR Panel	INH8454	913	1,095	10
MMR Switch With Shutter	INH8455	485	580	10

Description	Reference Number	Zencelo India (INR)				Std. Packing
		White Colour	Dark Grey Colour	Silver Bronze Colour	Satin Silver Colour	

### Cover Plates



IN8401C IN8402C IN8403C



IN8404C IN8406C



IN8408HC



IN8409C



IN8408SC IN84012C IN84018C

1 Module Grid and Cover Plate	IN8401C	120 *	145	363	363 *	10
2 Module Grid and Cover Plate	IN8402C	124 *	150	360	360 *	10
3 Module Grid and Cover Plate	IN8403C	147 *	182	442	442 *	10
4 Module Grid and Cover Plate	IN8404C	161 *	213	533	533 *	10
6 Module Grid and Cover Plate	IN8406C	245 *	284	729	729 *	5
8 Module Grid and Cover Plate	IN8408SC	400 *	522	1,260	1,260 *	5
8 Module Grid and Cover Plate	IN8408HC	295 *	360	990	990 *	5
9 Module Grid and Cover Plate	IN8409C	475 *	623	1,584	1,584 *	5
12 Module Grid and Cover Plate	IN84012C	656 *	808	2,210	2,210 *	5
18 Module Grid and Cover Plate	IN84018C	892 *	1,071	2,930	2,930 *	5

\* Available ex warehouse  
For Colour plates add following Suffix:  
Dark Grey Colour (BZ) | Silver Bronze Colour (SZ) | Silver Satin Colour (SA)

### Blank Off

1 Module Size Blank Off Cover	IN8430X	57	68			10
-------------------------------	---------	----	----	--	--	----



Description	Reference Number	Zencelo India (INR)	Std. Packing
<b>Others</b>			
Night Foot Lamp With Yellow LED	IN8490FLY	1,426	10
Night Foot Lamp With White LED	IN8490FLW	1,452 *	10
Cord Outlet (Connection Unit)	IN8445CO	147	10
Cord Outlet Connection Unit (Dark Grey Color)	IN8445CO (BZ)	179	10
Surface Mount 1CH 360° Slim PIR Sensor	CSS54E_WE	2,750	1
Wall Mount 3W 90° PIR Motion Sensor	E84751MS3A_WE	3,646	1
Wall Mount 3W 110° PIR Motion Sensor	E84751MS3B_WE	3,646	1
Uni Shaver Unit, Horizontal	E84T727H>SZ-OS	3,373	1
Flush/Surface Mount Single-Load 360° PIR Sensor	SAE-UE-MS-CSAWE	3,340	

#### Metal Boxes



Metal Box 1 & 2 Modules - 0.8mm	GE0102	70	60
Metal Box 3 Modules - 0.8mm	GE0103	90	45
Metal Box 4 Modules - 0.8mm	GE0104	104	30
Metal Box 1 & 2 Modules - 1mm	GR1102	79	60
Metal Box 3 Modules - 1mm	GR1103	102	45
Metal Box 4 Modules - 1mm	GR1104	119	30
Metal Box 6 Modules - 1mm	GR1106	163	20
Metal Box 8 Modules, Linear - 1mm	GR1108	214	15
Metal Box 8 Modules, Square - 1mm	GR1109	214	20
Metal Box 12 Modules - 1mm	GR1112	263	10
Metal Box 18 Modules - 1mm	GR1118	313	5

#### Warranty



- > Schneider Electric India Private Limited, (hereinafter referred to as "Schneider Electric"), shall, at its sole discretion, repair or replace products, if the products are found to be defective, solely as a result of faulty material and/or workmanship, within 10 years from the date of purchase, in the case of electro-mechanical wiring device products.
- > The warranty for all mains-related electronic wiring devices products viz. dimmers, LED indicators, step fan regulators, motor starters & indicator modules shall be for a period of 18 months from the date of purchase.
- > This warranty does not include Schneider Electric mounting boxes. The warranty defines Schneider Electric's entire liability & does not cover any consequential loss or damage, or any re-installation costs arising from the defective products.
- > Schneider Electric reserves the right to change/improve the design of its Products, without prior notice. In such cases, replacements shall be carried out, with the prevalent / existing design of the accessories prevailing at that point in time.
- > This warranty for above products shall be rendered null & void in case of the following:
  - If the original Schneider Electric mounting boxes have not been used to mount the plates & accessories.
  - If any attempt has been made to rectify, dismantle, tamper or alter the product by any third party vendor or by the Customer himself.
  - If the products are not installed as per the appropriate design specifications...
- > Disputes if any will be subject to exclusive jurisdiction of courts at Delhi.



**Retail Business**



**Also available from Schneider Electric**

**NeoBreak**  
MCBs, RCCBs, DBs

**Vivace**  
Stylish & Elegant Switch

**EasyPact MCCBs**  
Easy, Safe and Simple

## About Schneider Electric

As a global specialist in energy management, Schneider Electric offers integrated solutions across multiple market segments, including leadership positions in energy and infrastructure, industrial processes, building automation, and data centres/networks, as well as a broad presence in residential applications.

Focused on making energy safe, reliable, and efficient, the Company is committed to help individuals and organizations **"Make the most of their energy"**.



### Schneider Electric Worldwide



€ 24  
billion sales in 2012



41  
% of sales in new economies



140000 +  
people in 100+ countries



4-5%  
Revenue devoted to R&D

### Schneider Electric in India



19000 +  
employees



31  
Global Manufacturing Plants



10 +  
Distribution Centres



1000 +  
R&D engineers in Bangalore



1  
Regional Project & Engineering Centre



#### Schneider Electric India Pvt. Ltd.

**Corporate Office** : 9th Floor, DLF Building No. 10, Tower C, DLF Cyber City, Phase II, Gurgaon - 122002, Haryana, Tel: 0124 3940400, Fax: 0124 4222036  
[www.schneider-electric.com](http://www.schneider-electric.com)

**Customer Care Centre**: Toll-free numbers: 1800 425 4272, 1800 103 0011  
General number: 0124 4222040, Email: [customer care.in@schneider-electric.com](mailto:customer care.in@schneider-electric.com)

Retailer's Stamp

